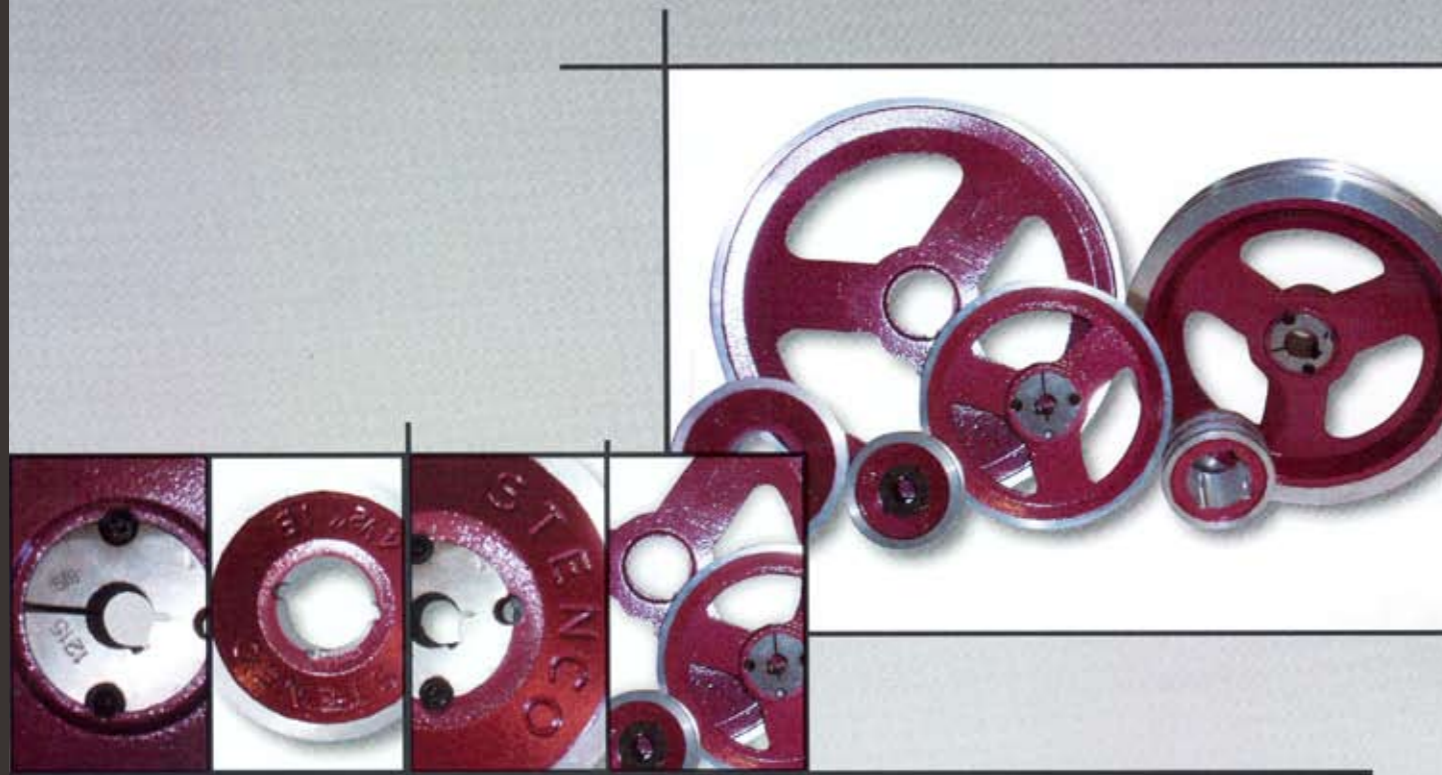


STENCO | DIE CASTINGS PTY LTD



MANUFACTURERS OF PRECISION ALUMINIUM PULLEYS





MANUFACTURERS OF PRECISION ALUMINIUM PULLEYS

STENCO | LOC

PCD	1A	2A	1B	2B
3"	1A030T	2A030T	1B030T	2B030T
3 1/2"	1A032T	2A032T	1B032T	2B032T
4"	1A040T	2A040T	1B040T	2B040T
4 1/2"	1A042T	2A042T	1B042T	2B042T
5"	1A050T	2A050T	1B050T	2B050T
5 1/2"	1A052T	2A052T	1B052T	2B052T
6"	1A060T	2A060T	1B060T	2B060T
6 1/2"	1A062T	-	-	-
7"	1A070T	2A070T	1B070T	2B070T
8"	1A080T	2A080T	1B080T	2B080T
9"	1A090T	2A090T	1B090T	2B090T
10"	1A100T	2A100T	1B100T	2B100T
12"	1A120T	2A120T	1B120T	2B120T

Note: Set screws and Keyways ARE NOT required for Stenco Loc Pulleys

STENCO | TAPER LOCK

PCD	TAPER LOCK	BORE SIZES AVAILABLE
1A 3"-6 1/2" 1B 3"-3 1/2"	1108	Metric 9 10 11 12 14 16 18 20 22 24 25 28 Imperial 3/8" 1/2" 5/8" 7/8" 1"
1A 7"-12" 1B 4"-12"	1210*	Metric 11 12 14 16 18 19 20 22 24 25 28 30 32 Imperial 1/2" 5/8" 3/4" 7/8" 1" 1 1/8" 1 1/4"
ALL 2A-2B	1215*	For extra length to taper lock (order 1215)*

Note: Imperial Bore Sizes 1/2", 5/8", 3/4", 1" are available in Standard Stenco Aluminium Pulleys Stock Items

TAPER LOCK FITTING INSTRUCTIONS

1108	Maximum Torque Tightening is 6 Nm
1210	Maximum Torque Tightening is 20 Nm
1215	Maximum Torque Tightening is 20 Nm

These are Taper Lock manufacturer recommendations and must be strictly adhered to, NO RESPONSIBILITY will be taken by manufacturer unless fitting instructions are followed.

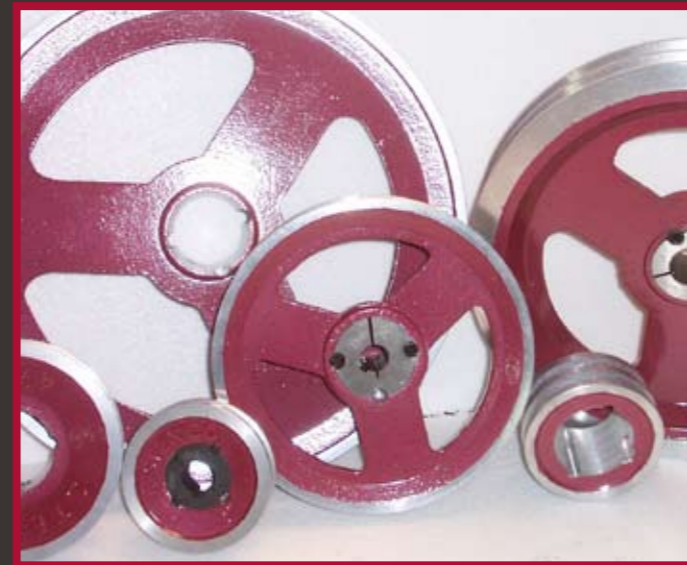
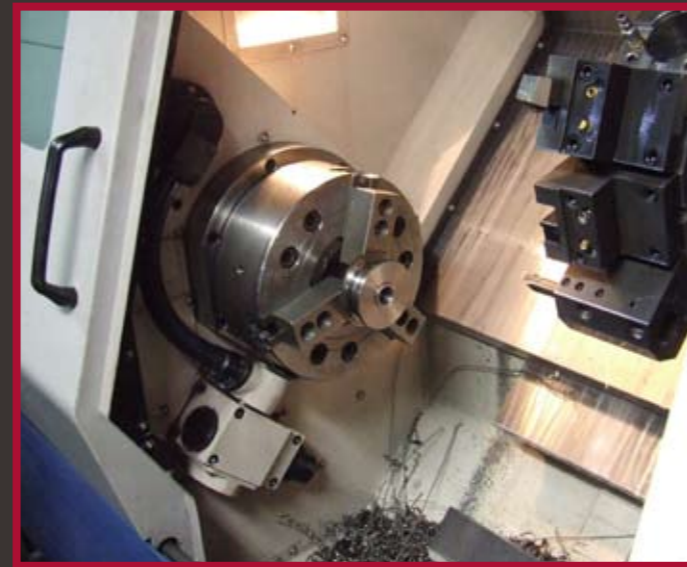
Excel - Stenco Bore Sizes Available.

"AUSTRALIAN MADE & DESIGNED"

V BELT SECTION M & STEPPED PULLEYS



PITCH CIRCLE DIAMETER (inches)	SINGLE GROOVE 1M				OUTSIDE DIAMETER (inches)	STEP PULLEYS A-SECTION			
	BORE 1/2" (01)	BORE 5/8" (02)	BORE 3/4" (03)	BORE 1" (04)		BORE 1/2" (01)	BORE 5/8" (02)	BORE 3/4" (03)	BORE 1" (04)
1-1/4	1M0111	1M0112	1M0113			TWO STEP PULLEY			
1-1/2	1M0121	1M0122	1M0123		3-1/4, 2-1/2	2S3421	2S3422	2S3423	2S3424
1-3/4	1M0141	1M0142	1M0143			FOUR STEP PULLEY			
2	1M0201	1M0202	1M0203	1M0204	3-1/4, 2-3/4,				
2-1/4	1M0241	1M0242	1M0243	1M0244	2-1/2, 1-3/4	4S3441	4S3442	4S3443	
2-1/2	1M0221	1M0222	1M0223	1M0224	4, 3-1/4,				
3	1M0301	1M0302	1M0303	1M0304	2-1/2, 1-3/4	4S4001	4S4002	4S4003	
3-1/4					4-1/2, 3,				
3-1/2	1M0321	1M0322	1M0323	1M0324	2-3/4, 2	4S4201	4S4202	4S4203	
4	1M0401	1M0402	1M0403	1M0404	5, 3-7/8, 2-				
4-1/2	1M0421	1M0422	1M0423	1M0424	13/16, 1-3/4	4S5001	4S5002	4S5003	
5	1M0501	1M0502	1M0503	1M0504	5-1/2, 4-1/2,				
5-1/2	1M0521	1M0522	1M0523	1M0524	3-5/16, 2-1/4	4S5201	4S5202	4S5203	4S5204
6	1M0601	1M0602	1M0603	1M0604	7, 6, 5, 4	4S7001	4S7002	4S7003	4S7004
All bores supplied with set screws									
ODxWidth	CROWN FACE PULLEYS				FIVE STEP PULLEY				
2x1-1/2	CF2121	CF2122	CF2123		6, 5-1/4,				
2-1/2x2	CF2221	CF2222	CF2223	CF2224	4-1/2, 3-3/4, 3	5S6001	5S6002	5S6003	5S6004
2-3/4x1-1/2	CF2341	CF2342	CF2343	CF2344		SIX STEP PULLEY			
3x1-1/4	CF3141	CF3142	CF3143	CF3144	7, 6, 5, 4, 3, 2	6S7001	6S7002	6S7003	6S7004
3x2	CF3201	CF3202	CF3203	CF3204		BAND SAW PULLEY			
3x3	CF3301	CF3302	CF3303	CF3304					
3-1/2x3	CF3501	CF3502	CF3503	CF3504	10	2A1006			
4x3	CF4301	CF4302	CF4303	CF4304	12	2A1206			
4x4	CF4401	CF4402	CF4403	CF4404					
4-1/2x3-1/2	CF4531	CF4532	CF4533	CF4534		Non standard bores & Keyways are subject to quantity discounts on request			
4-1/2x4-1/2	CF4541	CF4542	CF4543	CF4544		All pulleys supplied with standard keyways except 1A Section, 1M Section and 1/2" bores.			
5-1/2x5	CF5551	CF5552	CF5553	CF5554		All bores supplied with set screws			



V BELT SECTION A



V BELT SECTION B



PITCH CIRCLE DIAMETER (inches)	BORE				BORE (01)	Bores supplied with keyways		
	1/2" (01)	5/8" (02)	3/4" (03)	1" (04)		5/8" (02)	3/4" (03)	1" (04)
1-1/4	1A0111	1A0112	1A0113					
1-1/2	1A0121	1A0122	1A0123					
1-3/4	1A0141	1A0142	1A0143					
2	1A0201	1A0202	1A0203	1A0204	2A0201	2A0202	2A0203	2A0204
2-1/4	1A0241	1A0242	1A0243	1A0244				
2-1/2	1A0221	1A0222	1A0223	1A0224	2A0221	2A0222	2A0223	2A0224
2-3/4	1A0231	1A0232	1A0233	1A0234				
3	1A0301	1A0302	1A0303	1A0304	2A0301	2A0302	2A0303	2A0304
3-1/4	1A0341	1A0342	1A0343	1A0344				
3-1/2	1A0321	1A0322	1A0323	1A0324	2A0321	2A0322	2A0323	2A0324
4	1A0401	1A0402	1A0403	1A0404	2A0401	2A0402	2A0403	2A0404
4-1/2	1A0421	1A0422	1A0423	1A0424	2A0421	2A0422	2A0423	2A0424
5	1A0501	1A0502	1A0503	1A0504	2A0501	2A0502	2A0503	2A0504
5-1/2	1A0521	1A0522	1A0523	1A0524	2A0521	2A0522	2A0523	2A0524
6	1A0601	1A0602	1A0603	1A0604	2A0601	2A0602	2A0603	2A0604
6-1/2	1A0621	1A0622	1A0623	1A0624				
7	1A0701	1A0702	1A0703	1A0704	2A0701	2A0702	2A0703	2A0704
8	1A0801	1A0802	1A0803	1A0804	2A0801	2A0802	2A0803	2A0804
9	1A0901	1A0902	1A0903	1A0904	2A0901	2A0902	2A0903	2A0904
10	1A1001	1A1002	1A1003	1A1004	2A1001	2A1002	2A1003	2A1004
12	1A1201	1A1202	1A1203	1A1204	2A1201	2A1202	2A1203	2A1204
14	1A1401	1A1402	1A1403	1A1404	2A1401	2A1402	2A1403	2A1404
15	1A1501	1A1502	1A1503	1A1504	2A1501	2A1502	2A1503	2A1504
16	1A1601	1A1602	1A1603	1A1604	2A1601	2A1602	2A1603	2A1604
18	1A1801	1A1802	1A1803	1A1804	2A1801	2A1802	2A1803	2A1804

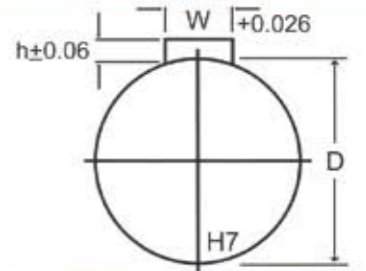
All bores supplied with set screws

PITCH CIRCLE DIAMETER (inches)	BORE				BORE (01)	Bores supplied with keyways		
	1/2" (01)	5/8" (02)	3/4" (03)	1" (04)		5/8" (02)	3/4" (03)	1" (04)
2	1B0201	1B0202	1B0203	1B0204	2B0201	2B0202	2B0203	2B0204
2-1/2	1B0221	1B0222	1B0223	1B0224	2B0221	2B0222	2B0223	2B0224
3	1B0301	1B0302	1B0303	1B0304	2B0301	2B0302	2B0303	2B0304
3-1/2	1B0321	1B0322	1B0323	1B0324	2B0321	2B0322	2B0323	2B0324
4	1B0401	1B0402	1B0403	1B0404	2B0401	2B0402	2B0403	2B0404
4-1/2	1B0421	1B0422	1B0423	1B0424	2B0421	2B0422	2B0423	2B0424
5	1B0501	1B0502	1B0503	1B0504	2B0501	2B0502	2B0503	2B0504
5-1/2	1B0521	1B0522	1B0523	1B0524	2B0521	2B0522	2B0523	2B0524
6	1B0601	1B0602	1B0603	1B0604	2B0601	2B0602	2B0603	2B0604
7	1B0701	1B0702	1B0703	1B0704	2B0701	2B0702	2B0703	2B0704
8	1B0801	1B0802	1B0803	1B0804	2B0801	2B0802	2B0803	2B0804
9	1B0901	1B0902	1B0903	1B0904	2B0901	2B0902	2B0903	2B0904
10	1B1001	1B1002	1B1003	1B1004	2B1001	2B1002	2B1003	2B1004
12	1B1201	1B1202	1B1203	1B1204	2B1201	2B1202	2B1203	2B1204
14	1B1401	1B1402	1B1403	1B1404	2B1401	2B1402	2B1403	2B1404
15	1B1501	1B1502	1B1503	1B1504	2B1501	2B1502	2B1503	2B1504
16	1B1601	1B1602	1B1603	1B1604	2B1601	2B1602	2B1603	2B1604
18	1B1801	1B1802	1B1803	1B1804	2B1801	2B1802	2B1803	2B1804

All bores supplied with set screws

STOCK BORE SIZE & KEYWAY DIMENSIONS

D	H	(MM)	W	h
1/2"	+0.02	0	1/8"	1/16"
5/8"	+0.02	0	3/16"	3/32"
3/4"	+0.02	0	3/16"	3/32"
1"	+0.02	0	1/4"	1/8"



METRIC BORE (5) - PART NUMBERS

STENCO | DIE CASTINGS PTY LTD

14 Nagle Street Wagga Wagga NSW 2650 Australia. Ph: (02) 6921 5577 Fax: (02) 6921 8845